

# DECORATIVE LIGHT, LIGHT BARS & LED-STRIPS

Due to production-related reasons the light colour of LEDs can vary amongst each other. The value for light colour and lumen, as far as they are mentioned, are typical average values. We do our best to deliver every shipment with the same colour selection. However by follow-up orders we cannot guarantee the same light colour. Detailed technical data sheets to the topic LED strips can be obtained on request.

LIM® - Light In Motion  Decorative light	 Page 561	 Page 563	 Page 563	 Page 562	 Page 564		
Light bars Single colour	 Page 566-567	Light bars RGB	 Page 567				
Indoor Flexible strips Single colour	 Page 572-575	Indoor Flexible strips RGB	 Page 578-579	Outdoor Flexible strips Single colour	 Page 576-577	Outdoor Flexible strips RGB	 Page 580
Indoor Rigid strips Single colour	 Page 568-570	Indoor Rigid strips RGB	 Page 570	Outdoor Rigid strips Single colour	 Page 584	Outdoor Rigid strips RGB	 Page 585
Profiles for LED strips	 Page 581	 Page 581	 Page 582				



Extraordinary atmosphere by coloured light realization with the multicolour lighting bank and light modules of the LIM®-light systems.

Additive colour mixture with six colour fluorescent bulbs makes the simulation of various colour situations possible, from the neutral colour of daylight up to all spectral colours of light. Even finest pastel shades in exceptionally homogeneous light distribution are no problem.

The LIM® lighting technology offers various application possibilities to you: in sales and presentation areas the light attraction of colour changing luminous ceilings and light banks provide a special attention. In business areas you can control the quantity of light, colour of light and light balance of whole office wings. In the reception or hotel area as well as in the catering trade you can create a stylish atmosphere with LIM® light elements. In medical practices and hospitals the LIM® Light system makes special lighting solutions possible depending upon desire either more functionally or more decoratively.

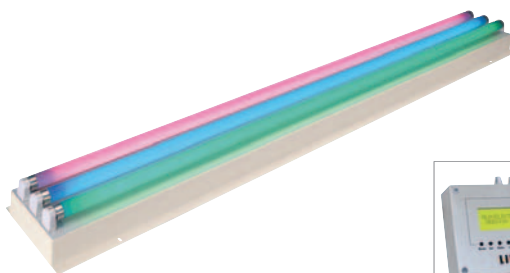
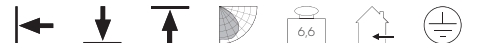
With a master unit a max. of 200 RGB Slave-Light-Banks can be controlled. With the installation of the light bank a maximum usage of the electrical circuit must be adhered to (per 16 ampere electric circuit up to 30 RGBSlave-Light banks).

The LIM®2 RGB control console enables together with the RGB master light banks and/or RGB master light module the control and the calling up of light colour and light level by a key stroke. 4 light scenes can be pre-programmed and called up by a key stroke. Also dynamic sequences of the programmed light scenes are possible due to selectable stationary and change-over times. 4 different sequencing programs with 8 light scenes each are already stored in the system. Further features are panic circuit, external switching entry and variable time intervals.

A comfortable system, which does not require prior knowledge of the system. It can also be used by end users without problem.

### LIM® RGB MASTER LIGHT MODULE 3x 36W Design by CDC

230~



**Socket/Bulb:**  
G13/T8 (incl.)  
each 1x red, green, blue  
3x 36W

**Material:**  
Steel

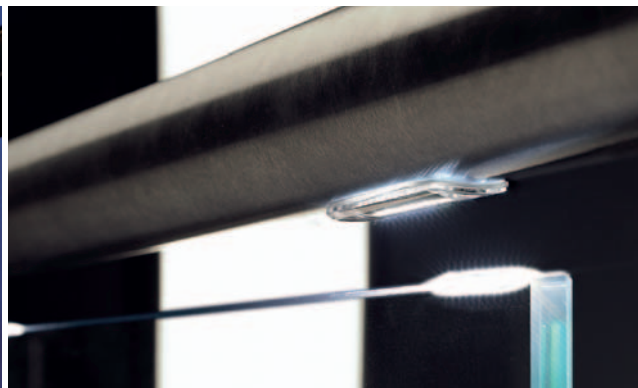
**Dimensions:**  
L/W/D: 123/19/9 cm

**Accessory/Included parts:**  
3 Electronic ballasts (incl.)  
LIM®2 controller (incl.)

**Versions:** Art. No.:  
Master module **with** integrated  
signal converter 1-10V and  
control console 158020

Slave module **without** signal converter,  
for control voltage 1-10V 158021

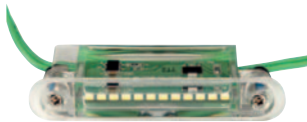
Multicolor-lightmodules with particularly homogenous light emission for the universal application in light walls through simple surface fitting and lighting up a diffuser wall mounted at a distance. According to application this distance can vary between 20 cm or more. The applied bulbs must be from the same manufacturer and be burned-in for 100 hours at full 100% brightness to guarantee a equal colour distribution and quality. A data sheet can be sent on request.



## LED MULTIFUNCTION-MODULE

24~  12 pce.  7,4/1,3  120°  0,36  IP65

**LED**  
LEDTEC



**Note:**  
In outdoor areas and all other areas where the installation could become moist, please seal all connections with a shrink tube.  
May only be screwed together with safety torx tool (T10).  
Operate only with conventional transformer, see page 597.  
Maximum load:  
20 modules = 20VA-Transformer,  
60 modules = 60VA-Transformer.

**Bulb:**  
LED SMD (incl.)  
0,7W per module

**Material:**  
Polycarbonate transparent

**Dimensions:**  
Module-L/W/H: 8/1,5/2,4 cm.  
20 cm cable at each side.  
Min. material thickness: 1 mm  
Max. material thickness: 10 mm  
Optimal tube-Ø: 40-80 mm.

**Accessory/Included parts:**  
Power unit/Transformer (excl.)

**Versions:**  
LED white  
LED warm white

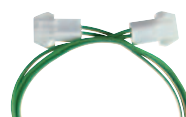
**Art. No.:**  
234001  
234002

## ACCESSORY for LED Multifunction-Module



**Feed-in**  
2 m, 60W max.

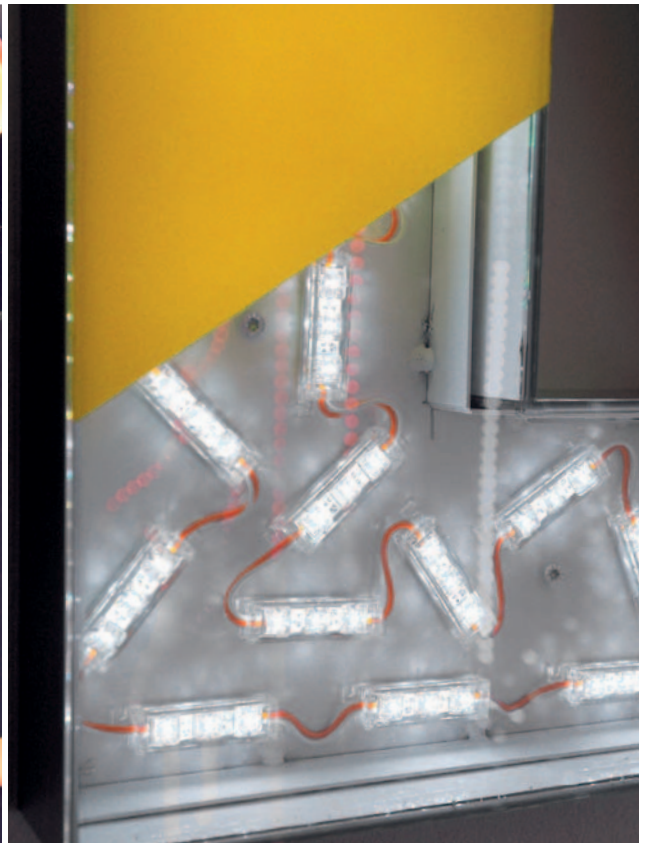
**Art. No.:**  
234010



**Connector**  
20 cm, 60W max  
50 cm, 60W max

**Art. No.:**  
234011  
234012





LEDI LIGHT® FIBRE SET LED



**Bulb:**  
PowerLED (incl.)  
6,3 W

**Dimensions:**  
L/W/H: 14,5/7,5/5 cm  
Core-L/Ø: approx.200/0,007 cm  
End caps-L/Ø: 3,3/1 cm  
Supply line-L: 1,5 m

**Accessory/Included parts:**  
80 end caps (incl.)  
Transformer (incl.)  
Mains plug (incl.)

**Versions:**  
LED white

**Art. No.:**  
631100

80 approx. 2 m fibre cores which are fed in via a 4 channel fibre generator based on LED technique with which the necessary luminous intensity is supplied. Can also be used without caps. Installation dimensions for the use with caps.  
Adapter: prim.: 230V/50Hz, sec.: 6V/250HZ

MINI LED MODULE CHAIN



25 modules with each 3 LEDs.  
Seperable after every module.  
Max. 4 chains can be connected consecutively.  
Power units see pages 594-595.

**Bulb:**  
SuperFlux LED (incl.)  
6W per chain

**Material:**  
PC/artificial resin

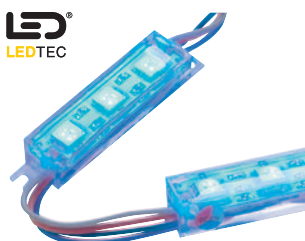
**Dimensions:**  
Module-L/W/H: 5,4/1,3/0,9 cm  
Module distance: 3,8 cm  
Chain-L: 2 m  
Supply line-L: 0,3 m

**Accessory/Included parts:**  
Power unit (excl.)

**Versions:**  
LED white  
LED green ▼

**Art. No.:**  
550401  
550405

RGB MINI LED MODULE CHAIN 3in1



25 modules with each 3 LEDs.  
Seperable after every module.  
Power units see page 594.  
Controllable with Easy LIM® controller (470503) see page 589.

**Bulb:**  
3in1 RGB LED (incl.)  
15W per chain

**Material:**  
PC/artificial resin

**Dimensions:**  
Module-L/W/H: 5,4/1,3/0,9 cm  
Chain-L: 2 m

**Accessory/Included parts:**  
Power unit (excl.)  
Controller (excl.)

**Versions:**  
LED RGB

**Art. No.:**  
550403



### PENLIGHT® 230V

Accessory/Included parts:  
Feed-in set (incl.)  
Mains plug (incl.)

Note:  
Mains cable-L: 1,5 m.  
Maximal admissible PenLight®-length  
per feed-in: 40 m



### LED PENLIGHT® PRO 230V



Accessory/Included parts:  
Feed-in set (incl.)  
Rectifier (incl.)  
Mains plug (incl.)

Note:  
Mains cable-L: 1,5 m



### PENLIGHT® / LED PENLIGHT® PRO

230~ ← ↑ ↓ IP44

Article No.	Description	Light/LED colour	Voltage	Wattage	Bulb/LED distance in cm	Bulbs/LEDs per strip	Bulbs/LEDs per 1,5 m	Ø in cm	Length in m	Separability	Weight
232310	PenLight® 10	warm white	230V AC	0,61A/140W	2,75	360	54	1,3	10,0	every 36 bulbs	2,2 kg
232340	PenLight® 40	warm white	230V AC	2,4A/560W	2,75	1440	54	1,3	40,0	every 36 bulbs	7,6 kg
232711	LED PenLight® PRO 10,5	white	230V AC	4,6W/1,5 m	2,77	378	54	1,3	10,5	every 1,5 m	2,08 kg
232712	LED PenLight® PRO 10,5	warm white	230V AC	4,6W/1,5 m	2,77	378	54	1,3	10,5	every 1,5 m	2,08 kg
232717	LED PenLight® PRO 10,5	blue	230V AC	4,6W/1,5 m	2,77	378	54	1,3	10,5	every 1,5 m	2,08 kg
232741	LED PenLight® PRO 40,5	white	230V AC	4,6W/1,5 m	2,77	1458	54	1,3	40,5	every 1,5 m	6,4 kg
232742	LED PenLight® PRO 40,5	warm white	230V AC	4,6W/1,5 m	2,77	1458	54	1,3	40,5	every 1,5 m	6,4 kg
232747	LED PenLight® PRO 40,5	blue	230V AC	4,6W/1,5 m	2,77	1458	54	1,3	40,5	every 1,5 m	6,4 kg

### ACCESSORY for PenLight® and LED PenLight® Pro

Track, 1 piece  
Track-L: 1 m  
232661



End cap, 1 piece  
IP44 after sticking with Turbo adhesive 100 (232600).  
232691



Fastening clips, 100 pce.  
232651



Gutter clips, 10 pieces  
232681



Feed-in set for PenLight®  
IP44 after sticking with Turbo adhesive 100.  
End cap, mains plug,  
Turbo adhesive 100 (incl.)  
232611



Feed-in set for LED PenLight® Pro  
IP44 after sticking with Turbo adhesive 100.  
End cap, mains plug, rectifier,  
Turbo adhesive 100 (incl.)  
232700



Longit. connector, 1 pce.  
IP44 after sticking with  
vinegar-free silicone.  
232641



Turbo adhesive 100  
232600









### PADI LED 600 Light bar

24=



**Bulb:**  
LED (incl.)



**Material:**  
Aluminium anodized/PC

**Dimensions:**  
Supply line-L: 1,5 m



**Accessory/Included parts:**  
3 mounting brackets (incl.)  
Power unit (excl.)

**Connect. recommendation:**  
LED power unit 12W, 24V=  
470502



**Connect. recommendation:**  
LED power unit, 100W, 24V=  
470540 dimmable



**Note:**  
When connecting several light bars,  
please pay attention to the total  
wattage! Further power units can  
be found in the accessory range  
on pages 594-595.

Article No.	Description	LED colour	Voltage	Wattage	LED distance in cm	LEDs per bar	Length in cm	Width in cm	Height in cm	Operating life	Separability
111731	Padi LED 600 light bar	white	24V DC	4W	1,0	48	60,6	1,6	0,8	20000 h	-
111732	Padi LED 600 Light bar	warm white	24V DC	4W	1,0	48	60,6	1,6	0,8	20000 h	-





**DELF C PRO Light bar**



**Bulb:**  
SMD LED (incl.)

**Material:**  
Aluminium anodized/plastic

**Accessory/Included parts:**  
Power unit (excl.)

**Note:**  
Directly connectable via wrap connections.  
By an output of >50W a new feed-in must be made!  
When connecting several light bars, please pay attention to the total wattage!  
Further power units can be found in the accessory range on pages 594-595.

**Connect. recommendation:**  
LED power unit 12W, 24V= 470502



**DELF C PRO Light bar RGB**



**Bulb:**  
3in 1 SMD LED (incl.)

**Material:**  
Aluminium anodized/plastic

**Accessory/Included parts:**  
Power unit (excl.)  
Controller (excl.)

**Note:**  
Directly connectable via wrap connections.  
By an output of >50W a new feed-in must be made!  
When connecting several light bars, please pay attention to the total wattage! Further controllers can be found in the accessory range from page 587 onward.

**Connect. recommendation:**  
Power LIM®2 RGB Master controller 24V= 470581



**Connect. recommendation:**  
Power LIM®2 RGB Slave controller 24V= 470582



**Con. recommendation:**  
Remote control for Master controller 470520



**DELF C PRO**



Article No.	Description	LED Colour	Voltage	Wattage	LED distance in cm	LEDs per bar	Length in cm	Width in cm	Height in cm	Operating life	Weight
631451	Delf C 500 Pro	white	24V DC	4,9W	1,1	30	50,0	2,0	1,5	20000 h	0,12 kg
631452	Delf C 500 Pro	warm white	24V DC	4,9W	1,1	30	50,0	2,0	1,5	20000 h	0,12 kg
631461	Delf C 1000 Pro	white	24V DC	11,6W	1,1	60	100,0	2,0	1,5	20000 h	0,23 kg
631462	Delf C 1000 Pro	warm white	24V DC	11,6W	1,1	60	100,0	2,0	1,5	20000 h	0,23 kg
631453	Delf C 500 RGB Pro	RGB	24V DC	7,5W	1,1	30	50,0	2,0	1,5	20000 h	0,12 kg
631463	Delf C 1000 RGB Pro	RGB	24V DC	14,6W	1,1	60	100,0	2,0	1,5	20000 h	0,23 kg



**ACCESSORY for DELF C PRO Light bar single colour**

**Feed-in cable**  
50W max.  
Cable-L: 1,5 m  
631470



**Flexible connector**  
50W max.  
Cable-L: 12 cm  
631471



**Mounting clips**  
10 pce.  
631472



**ACCESSORY for DELF C PRO Light bar RGB**

**Feed-in cable**  
50W max.  
Cable-L: 1,5 m  
631473



**Flexible connector**  
50W max.  
Cable-L: 12 cm  
631474



**Mounting clips**  
10 pce.  
631472







**DAYLIGHT LED STRIP 24V=**



**Bulb:**  
SMD LED (incl.)

**Accessory/Included parts:**  
Power unit (excl.)  
Integrated direct connector (incl.)

**Note:**  
Equipped with 10 white und 20 warm white LEDs.  
Not suitable for mounting track!  
By an output of >50W a new feed-in must be made!

**Connect. recommendation:**  
Power LIM®2 RGB  
Master controller 24V=  
470581



**Connect. recommendation:**  
Power LIM®2 RGB  
Slave controller 24V=  
470582



**Con. recommendation:**  
Remote control for the Master controller  
470520



**ACCESSORY for Daylight LED-Strip**

**Feed-in cable**  
Cable-L: 0,5 m  
550261 ▼



**Flex-Connector, 10 pce.**  
Cable-L: 5 cm  
550262 ▼



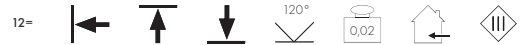
**Fastening clips**  
100 pce.  
550191



Article No.	Description	LED colour	Voltage	Wattage	LED distance in cm	LEDs per strip	LEDs per m	Length in cm	Width in cm	Height in cm	Operating life	Separability
550260 ▼	Daylight LED-Strip	white/warm white	24V DC	3W	2,5	30	111	26,5	1,4	0,9	20000 h	-



LED-STRIP 12V=



Bulb:  
SMD LED (incl.)

Accessory/Included parts:  
Power unit (excl.)

**Note:**  
Directly connectable via wrap connections. After separation a through-wiring is only possible via soldering. By an output of >25W a new feed-in must be made!

Connect. recommendation:  
LED power unit, 12W, 12V=  
470507



Connect. recommendation:  
LED power unit, 60W, 12V=  
470508



ACCESSORY for LED-Strip 12V=

Feed-in cable, 25W max., 2 pce.  
Cable-L: 50 cm  
550650



Article No.	Description	LED colour	Voltage	Wattage	LED distance in cm	LEDs per strip	LEDs per m	Length in cm	Width in cm	Height in cm	Operating life	Separability
550641	LED-Strip	white	12V DC	2,3W	1,2	30	62	48,5	0,8	0,6	20000 h	every 4,7 cm
550642	LED-Strip	warm white	12V DC	2,3W	1,2	30	62	48,5	0,8	0,6	20000 h	every 4,7 cm

Detailed technical data sheets to the topic LED strips can be obtained on request!



### LED-STRIPS 24V=

**Bulb:**  
LED (incl.)

**Accessory/Included parts:**  
Power unit (excl.)

**Note:**  
When connecting several strips, please pay attention to the total wattage! Further power units can be found on pages 594-595. By an output of >50W a new feed-in must be made.

**Connect. recommendation:**  
LED wall power supply 16V, 24V=  
Cable-L: 2m  
470571



### ACCESSORY for LED-Strips single colour

**Feed-in cable, 2 pce.**  
50W max.  
Cable-L: 50 cm  
550192



**Connector plug, 10 pce.**  
50W max.  
Cable-L: 10 cm  
550190



**Direct connector, 10 pce.**  
50W max.  
550193



**Fastening clips**  
100 pce.  
550191



### LED-STRIPS RGB 3in1 24V= RGB

**Bulb:**  
LED (incl.)

**Accessory/Included parts:**  
Power unit (excl.)  
Controller (excl.)  
Integrated direct connector (incl.)

**Note:**  
By an output of >50W a new feed-in must be made!

**Connect. recommendation:**  
Power LIM®2 RGB  
Master controller 24V=  
470581



**Connect. recommendation:**  
Remote control for the  
Master controller  
470520



**Connect. recommendation:**  
Power LIM®2 RGB  
Slave controller 24V=  
470582



### ACCESSORY for RGB LED-Strips

**Flex-Connector, 10 pce.**  
50W max.  
550792



**Feed-in cable**  
50W max.  
550791



**Mounting track**  
Track-L: 100 cm  
220631



**Fastening clips**  
100 pce.  
550191



### LED-STRIPS 24V=



Article No.	Description	LED colour	Voltage	Wattage	LED distance in cm	LEDs per strip	LEDs per m	Length in cm	Width in cm	Height in cm	Separability	Weight
550181	LED-Strip	white	24V DC	2W	1,3	24	78	30,5	0,7	0,7	every 7,6 cm	0,03 kg
550182	LED-Strip	warm white	24V DC	2W	1,3	24	78	30,5	0,7	0,7	every 7,6 cm	0,03 kg
550184	LED-Strip	yellow	24V DC	2,2W	1,3	24	78	30,5	0,7	0,7	every 7,6 cm	0,03 kg
550185	LED-Strip	green	24V DC	2W	1,3	24	78	30,5	0,7	0,7	every 7,6 cm	0,03 kg
550186	LED-Strip	red	24V DC	2,2W	1,3	24	78	30,5	0,7	0,7	every 7,6 cm	0,03 kg
550187	LED-Strip	blue	24V DC	2W	1,3	24	78	30,5	0,7	0,7	every 7,6 cm	0,03 kg
550790	RGB LED-Strip	RGB	24V DC	3W	2,5	10	40	25,0	1,6	0,7	not separable	0,02 kg







### FLEXLED ROLL 12V~



**Bulb:**  
LED (incl.)

**Connect. recommendation:**  
IP44 Conv. transf., 10VA, 12V~  
451010



**Accessory/Included parts:**  
Rectifier (incl.)  
Conventional transformer (excl.)  
Rear side equipped with adhesive tape.

**Note:**  
Min. bending radius: 1,3 cm.  
to max. +40°C.  
Connection of single Flex-strips via  
soldering or direct connector.  
From a length of 5,1 m a new feed-in  
must be made! Supply line-l: 30 cm.  
Suitable for PC tube (211200).  
Operate only with conventional  
transformer!

#### ACCESSORY for FlexLED Roll single colour 12V~ and 12V=

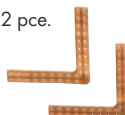
**Feed-in with 30 cm cable**  
up to 8 mm  
550412



**Direct connector, 2 pce.**  
up to 8 mm  
550415



**90° solder edges, 2 pce.**  
2A max.  
550570



### FLEXLED ROLL 24V=



**Bulb:**  
LED (incl.)

**Connect. recommendation:**  
LED power unit 12W, 24V=  
470502



**Accessory/Included parts:**  
No supply line.  
Power unit (excl.)  
Rear side equipped with adhesive tape.

**Note:**  
Min. bending radius: 1,3 cm.  
to max.+40°C.  
Connection of single Flex-strips via  
soldering or direct connector.  
From a length of 5 m a new feed-in  
must be made!

#### ACCESSORY for FlexLED Roll 24V=

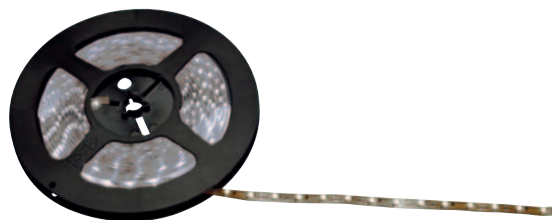
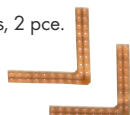
**Feed-in with 30 cm cable**  
up to 10 mm  
550413



**Direct connector, 2 pce.**  
up to 10 mm  
550416



**90° Solder edges, 2 pce.**  
2A max.  
550570



### FLEXLED ROLL 12V=



**Bulb:**  
LED (incl.)

**Connect. recommendation:**  
LED power unit, 12W, 12V=  
470507



**Accessory/Included parts:**  
No supply line.  
Power unit (excl.)  
Rear side equipped with adhesive tape.

**Note:**  
Min. bending radius: 1,3 cm.  
to max.+40°C.  
Connection of single Flex-strips via  
soldering or direct connector.  
From a length of 5 m a new feed-in  
must be made!  
Not suitable for PC tube!






**FLEXLED ROLL 12V~ / 12V= / 24V=**


Article No.	Description	LED colour	Voltage	Wattage	LED distance in cm	LEDs per Strip	LEDs per m	Length in m	Width in cm	Height in cm	Operating life	Separability	Weight
552031	FlexLED Roll	white	12V AC	2,9W	2,50	36	40	0,9	0,7	0,3	20000 h	every 15 cm	0,01 kg
552032	FlexLED Roll	warm white	12V AC	2,9W	2,50	36	40	0,9	0,7	0,3	20000 h	every 15 cm	0,01 kg
552041	FlexLED Roll	white	12V AC	9,6W	2,50	120	40	3,0	0,7	0,3	20000 h	every 15 cm	0,03 kg
552042	FlexLED Roll	warm white	12V AC	9,6W	2,50	120	40	3,0	0,7	0,3	20000 h	every 15 cm	0,03 kg
552051	FlexLED Roll	white	12V AC	16,5W	2,50	200	40	5,1	0,7	0,3	20000 h	every 15 cm	0,05 kg
552052	FlexLED Roll	warm white	12V AC	16,5W	2,50	200	40	5,1	0,7	0,3	20000 h	every 15 cm	0,05 kg
552001	FlexLED Roll	white	12V DC	4W	1,65	60	60	1,0	0,8	0,24	20000 h	every 5 cm	0,02 kg
552002	FlexLED Roll	warm white	12V DC	4W	1,65	60	60	1,0	0,8	0,24	20000 h	every 5 cm	0,02 kg
552007	FlexLED Roll	blue	12V DC	4W	1,65	60	60	1,0	0,8	0,24	20000 h	every 5 cm	0,02 kg
552011	FlexLED Roll	white	12V DC	12W	1,65	180	60	3,0	0,8	0,24	20000 h	every 5 cm	0,05 kg
552012	FlexLED Roll	warm white	12V DC	12W	1,65	180	60	3,0	0,8	0,24	20000 h	every 5 cm	0,05 kg
552017	FlexLED Roll	blue	12V DC	12W	1,65	180	60	3,0	0,8	0,24	20000 h	every 5 cm	0,05 kg
552021	FlexLED Roll	white	12V DC	20W	1,65	300	60	5,0	0,8	0,24	20000 h	every 5 cm	0,09 kg
552022	FlexLED Roll	warm white	12V DC	20W	1,65	300	60	5,0	0,8	0,24	20000 h	every 5 cm	0,09 kg
552027	FlexLED Roll	blue	12V DC	20W	1,65	300	60	5,0	0,8	0,24	20000 h	every 5 cm	0,09 kg
552101	FlexLED Roll	white	24V DC	5W	1,70	60	60	1,0	1,0	0,30	20000 h	every 10 cm	0,02 kg
552102	FlexLED Roll	warm white	24V DC	5W	1,70	60	60	1,0	1,0	0,30	20000 h	every 10 cm	0,02 kg
552107	FlexLED Roll	blue	24V DC	5W	1,70	60	60	1,0	1,0	0,30	20000 h	every 10 cm	0,02 kg
552111	FlexLED Roll	white	24V DC	15W	1,70	180	60	3,0	1,0	0,30	20000 h	every 10 cm	0,05 kg
552112	FlexLED Roll	warm white	24V DC	15W	1,70	180	60	3,0	1,0	0,30	20000 h	every 10 cm	0,05 kg
552117	FlexLED Roll	blue	24V DC	15W	1,70	180	60	3,0	1,0	0,30	20000 h	every 10 cm	0,05 kg
552121	FlexLED Roll	white	24V DC	25W	1,70	300	60	5,0	1,0	0,30	20000 h	every 10 cm	0,09 kg
552122	FlexLED Roll	warm white	24V DC	25W	1,70	300	60	5,0	1,0	0,30	20000 h	every 10 cm	0,09 kg
552127	FlexLED Roll	blue	24V DC	25W	1,70	300	60	5,0	1,0	0,30	20000 h	every 10 cm	0,09 kg

When connecting several strips, please pay attention to the total wattage! Further transformers or power units can be found from page 594 onward.







**FLEXLED ROLL PRO 12V=**



**Bulb:**  
LED (incl.)

**Connect. recommendation:**  
LED power unit, 12W, 12V=  
470507



**Accessory/Included parts:**  
No supply line.  
Power unit (excl.)  
Rear side equipped with adhesive tape.

**Note:**  
Min. bending radius: 1,3 cm  
to max.+40°C  
Connection of single Flex-strips via  
soldering or direct connector.  
From a length of 3 m a new feed-in  
must be made!

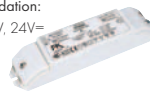


**FLEXLED ROLL PRO 24V=**



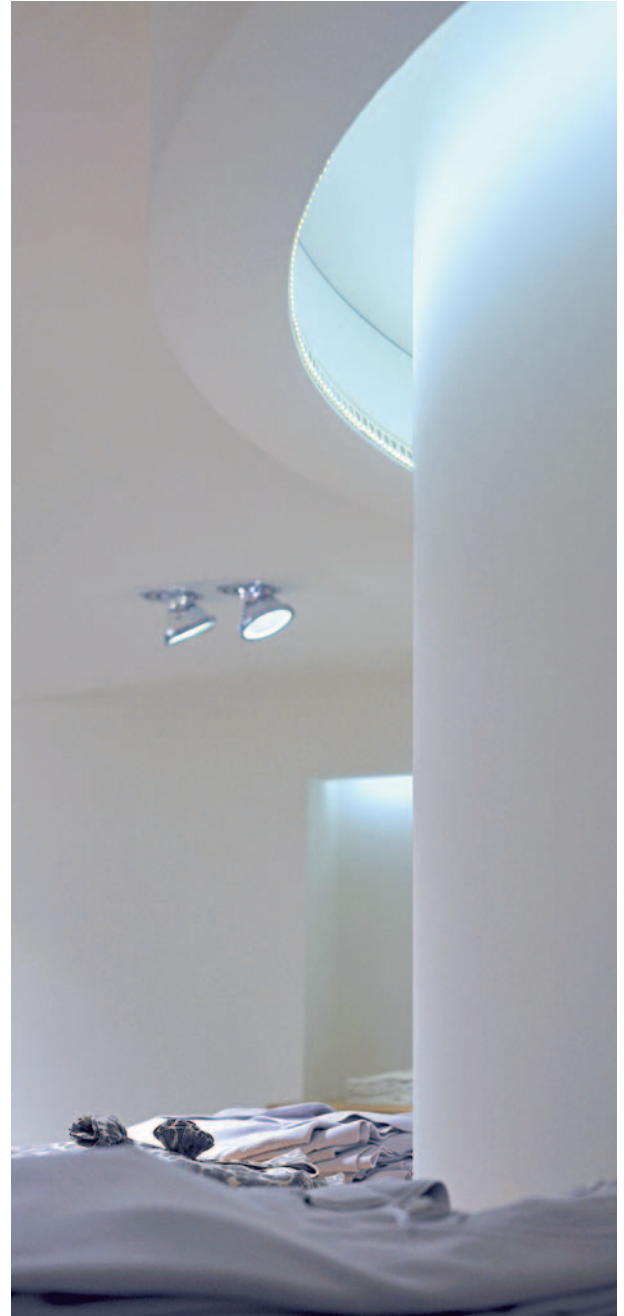
**Bulb:**  
LED (incl.)

**Connect. recommendation:**  
LED power unit, 20W, 24V=  
470542



**Accessory/Included parts:**  
No supply line.  
Power unit (excl.)  
Rear side equipped with adhesive tape.

**Note:**  
Min. bending radius: 1,3 cm  
to max.+40°C  
Connection of single Flex-strips via  
soldering or direct connector.  
From a length of 3 m a new feed-in  
must be made!



**FLEXLED ROLL PRO 12V= / 24V=**

Article No.	Description	LED colour	Voltage	Wattage	LED distance in cm	LEDs per strip	LEDs per m	Length in m	Width in cm	Height in cm	Operating life	Separability	Weight
552061	FlexLED Roll Pro	white	12V DC	10W	1,7	60	60	1,0	1,0	0,22	20000 h	every 5 cm	0,04 kg
552062	FlexLED Roll Pro	warm white	12V DC	10W	1,7	60	60	1,0	1,0	0,22	20000 h	every 5 cm	0,04 kg
552071	FlexLED Roll Pro	white	12V DC	30W	1,7	180	60	3,0	1,0	0,22	20000 h	every 5 cm	0,13 kg
552072	FlexLED Roll Pro	warm white	12V DC	30W	1,7	180	60	3,0	1,0	0,22	20000 h	every 5 cm	0,13 kg
552131	FlexLED Roll Pro	white	24V DC	13,3W	1,7	60	60	1,0	1,0	0,22	20000 h	every 10 cm	0,04 kg
552132	FlexLED Roll Pro	warm white	24V DC	13,3W	1,7	60	60	1,0	1,0	0,22	20000 h	every 10 cm	0,04 kg
552141	FlexLED Roll Pro	white	24V DC	40W	1,7	180	60	3,0	1,0	0,22	20000 h	every 10 cm	0,13 kg
552142	FlexLED Roll Pro	warm white	24V DC	40W	1,7	180	60	3,0	1,0	0,22	20000 h	every 10 cm	0,13 kg

FlexLED Roll Pro has 3 chips in one LED and consequently of a higher luminous flux.  
When connecting several strips, please pay attention to the total wattage! Further power units can be found on pages 594-595

**ACCESSORY for FlexLED Roll PRO 12V= and 24V=**

**Feed-in with 30 cm cable**  
up to 10 mm  
550413



**Direct connector, 2 pce.**  
up to 10 mm  
550416



**90° Solder edges, 2 pce.**  
2A max.  
550570











IP FLEXLED ROLL 12V=



Bulb:  
LED (incl.)

Connect. recommendation:  
LED power unit, 12W, 12V=  
470507



Accessory/Included parts:  
Power unit (excl.)  
Rear side equipped with adhesive tape.

Note:  
Supply line-L: 50 cm.  
Strip embedded in plastic.  
Min. bending radius: 3,75 cm.  
to max. -30°C up to +40°C  
Not extendable.  
From a length of 5 m a new feed-in must be made!



IP FLEXLED ROLL 24V=



Bulb:  
LED (incl.)

Connect. recommendation:  
LED power unit, 20W, 24V=  
470542



Accessory/Included parts:  
Power unit (excl.)  
Rear side equipped with adhesive tape.

Note:  
Supply line-L: 50 cm.  
Strip embedded in plastic.  
Min. bending radius: 3,75 cm.  
to max. -30°C up to +40°C  
Not extendable.  
From a length of 5 m a new feed-in must be made!

IP FLEXLED ROLL 12V= / 24V=



Article No.	Description	Colour	Voltage	Wattage	LED distance in cm	LEDs per strip	LEDs per m	Length in m	Width in cm	Height in cm	Operating life	Separability	Weight
552211	IP FlexLED Roll	white	12V DC	12W	1,65	180	60	3,0	1,0	0,5	20000 h	every 5 cm	0,2 kg
552212	IP FlexLED Roll	warm white	12V DC	12W	1,65	180	60	3,0	1,0	0,5	20000 h	every 5 cm	0,2 kg
552221	IP FlexLED Roll	white	12V DC	20W	1,65	300	60	5,0	1,0	0,5	20000 h	every 5 cm	0,33 kg
552222	IP FlexLED Roll	warm white	12V DC	20W	1,65	300	60	5,0	1,0	0,5	20000 h	every 5 cm	0,33 kg
552241	IP FlexLED Roll	white	24V DC	15W	1,70	180	60	3,0	1,3	0,5	20000 h	every 10 cm	0,2 kg
552242	IP FlexLED Roll	warm white	24V DC	15W	1,70	180	60	3,0	1,3	0,5	20000 h	every 10 cm	0,2 kg
552251	IP FlexLED Roll	white	24V DC	25W	1,70	300	60	5,0	1,3	0,5	20000 h	every 10 cm	0,33 kg
552252	IP FlexLED Roll	warm white	24V DC	25W	1,70	300	60	5,0	1,3	0,5	20000 h	every 10 cm	0,33 kg

When connecting several strips, please pay attention to the total wattage! Further power units can be found on pages 594-595





**FLEXLED ROLL RGB 12V=**



**Bulb:**  
LED (incl.)

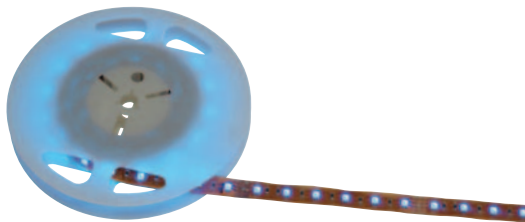
**Accessory/Included parts:**  
Power unit (excl.)  
Controller (excl.)  
Rear side equipped with adhesive tape.

**Note:**  
Min. bending radius: 1,3 cm  
to max.+40°C  
From a length of 3 m a new feed-in must be made!  
At 5 m the power supply must be made via a double-sided feed-in.  
New feed-in every 50 cm.

**Connect. recommendation:**  
LED power unit, 60W, 12V=  
470508



**Connect. recommendation:**  
Easy LIM® PRO RF 12V=/24V=  
Radio-Master controller  
16,5W/channel, 12V=  
33W/channel, 24V=  
470600



**FLEXLED ROLL RGB 24V=**



**Bulb:**  
LED (incl.)

**Accessory/Included parts:**  
Power unit (excl.)  
Controller (excl.)  
Rear side equipped with adhesive tape.  
No supply line.

**Note:**  
Min. bending radius: 1,3 cm  
to max.+40°C  
Not extendable.  
From a length of 5 m a new feed-in must be made!

**Connect. recommendation:**  
LED power unit, 100W, 24V=  
470500



**Connect. recommendation:**  
Easy LIM® PRO RF 12V=/24V=  
Radio-Master controller  
16,5W/channel, 12V=  
33W/channel, 24V=  
470600



**FLEXLED ROLL RGB 12V= / 24V=**



Article No.	Description	LED colour	Voltage	Wattage	LED distance in cm	LEDs per strip	LEDs per m	Length in m	Width in cm	Height in cm	Operating life	Separability	Weight
552003	FlexLED Roll RGB	RGB	12V DC	7W	2,77	36	36	1,0	1,0	0,22	20000 h	every 8,3 cm	0,06 kg
552013	FlexLED Roll RGB	RGB	12V DC	21W	2,77	108	36	3,0	1,0	0,22	20000 h	every 8,3 cm	0,08 kg
552023	FlexLED Roll RGB	RGB	12V DC	35W	2,77	180	36	5,0	1,0	0,22	20000 h	every 8,3 cm	0,10 kg
552103	FlexLED Roll RGB	RGB	24V DC	10W	2,10	48	48	1,0	1,5	0,20	20000 h	every 12,5 cm	0,04 kg
552113	FlexLED Roll RGB	RGB	24V DC	30W	2,10	144	48	3,0	1,5	0,20	20000 h	every 12,5 cm	0,07 kg
552123	FlexLED Roll RGB	RGB	24V DC	50W	2,10	240	48	5,0	1,5	0,20	20000 h	every 12,5 cm	0,10 kg

When connecting several strips, please pay attention to the total wattage! Further power units and controllers can be found on pages 588-591, 594-595.



**ACCESSORY for FlexLED Roll RGB 12V=**

Feed-in with 30 cm cable  
10 mm  
550414



Direct connector, 2 pce.  
10 mm  
550417



**ACCESSORY for FlexLED Roll RGB 24V=**

Feed-in with 50 cm cable  
15 mm  
550418



Direct connector, 1 pce.  
15 mm  
550419











IP FLEXLED ROLL RGB 12V=



**Bulb:**  
LED (incl.)

**Accessory/Included parts:**  
Power unit (excl.)  
Controller (excl.)  
Supply line-L: 50 cm  
Rear side equipped with adhesive tape.  
Strip embedded in plastic.

**Note:**  
Min. bending radius: 3,75 cm  
to max. -30°C up to +40°C  
Not extendable.

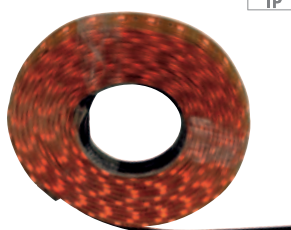
**Connect. recommendation:**  
LED power unit, 60W, 12V=  
470508



**Connect. recommendation:**  
Easy LIM® PRO RF 12V=/24V=  
Radio-Master controller  
16,5W/channel, 12V=  
33W/channel, 24V=  
470600



IP FLEXLED ROLL RGB 24V=



**Bulb:**  
LED (incl.)

**Accessory/Included parts:**  
Power unit (excl.)  
Controller (excl.)  
Supply line-L: 50 cm  
Rear side equipped with adhesive tape.  
Strip embedded in plastic.

**Note:**  
Min. bending radius: 1,3 cm  
to max. -30°C up to +40°C  
Not extendable.

**Connect. recommendation:**  
Power LIM®2 RGB  
Master controller 24V=  
470581



**Connect. recommendation:**  
Remote control for the  
Master controller  
470520



**Connect. recommendation:**  
Power LIM®2 RGB  
Slave controller 24V=  
470582



**Connect. recommendation:**  
LED power unit, 24V=, 60W  
470506



IP FLEXLED ROLL RGB 12V=/24V=



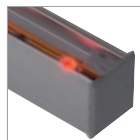
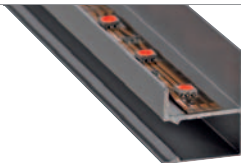
Article No.	Description	LED colour	Voltage	Wattage	LED distance in cm	LEDs/ Strips	LEDs/ m	Length in m	Width in cm	Height in cm	Operating life	Separability	Weight
552213	IP FlexLED Roll	RGB	12V DC	21W	2,77 cm	108	36	3,0	1,2	0,50	20000 h	every 8,3 cm	0,41 kg
552223	IP FlexLED Roll	RGB	12V DC	35W	2,77 cm	180	36	5,0	1,2	0,50	20000 h	every 8,3 cm	0,56 kg
552243	IP FlexLED Roll	RGB	24V DC	30W	2,10 cm	144	48	3,0	1,8	0,40	20000 h	every 10 cm	0,3 kg
552253	IP FlexLED Roll	RGB	24V DC	50W	2,10 cm	240	48	5,0	1,8	0,40	20000 h	every 10 cm	0,5 kg

When connecting several strips, please pay attention to the total wattage! Further controllers and power units can be found on pages 588-591 and 594-595.

ACCESSORY for IP FlexLED Roll RGB 12V= and 24V=

Fastening clips  
100 pce.  
550191




**LED WALL PROFILE**


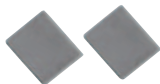
**Material:**  
Aluminium

**Versions:**  
alu anodized

**Art. No.:**  
213312

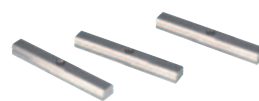
**Dimensions:**  
L/W/H: 200/2,3/3 cm  
inner: 2 cm

Aluminium profile for the simple mounting of LED strips to create an indirect illumination. Suitable for strips with a maximum width of 2 cm!

**ACCESSORY for LED wall profile**


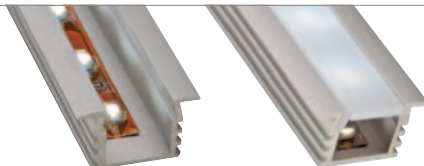
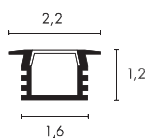
**End caps**  
(left and right)

**Art. No.:**  
213321



**Mounting holder, 3 pce.**  
alu anodized

**Art. No.:**  
213320

**LED FLUSH-MOUNTED PROFILE**


**Material:**  
Aluminium/plastic

**Versions:**  
Cover satined  
alu anodized

**Art. No.:**  
213332

**Dimensions:**  
visible-L/W: 100/2,2 cm  
inner: 1,1/0,9 cm

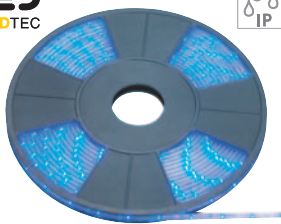
Aluminium profile for the simple mounting of LED strips. Suitable for strips with a maximum width of 1,1 cm!





LED TUBELIGHT 24V=

24V= IP55



**Bulb:**  
LED (incl.)

**Accessory/Included parts:**  
LED converter (excl.)

**Note:**  
Supply line-L: 50 cm.  
Min. bending radius: 1,3 cm.

**Note:**  
Plastic insulated LED strips with quadratic cross section, especially for application in stare nose profile. A maximum of 20m LED Tubelight can be operated by one feed-in. By an output of >44W a new feed-in must be made. Further power units see page 594-595.

**Connect. recommendation:**  
LED power unit, 24V=, 60W  
470506



Article No.	Description	LED colour	Voltage	Wattage	LED distance in cm	LEDs per strip	LEDs per m	Length in m	Width in cm	Height in cm	Separability
233001	LED Tubelight	white	24V DC	22W	2,8	360	36	10,0	0,55	0,35	every 16,7 cm
233002	LED Tubelight	warm white	24V DC	22W	2,8	360	36	10,0	0,55	0,35	every 16,7 cm
233007	LED Tubelight	blue	24V DC	22W	2,8	360	36	10,0	0,55	0,35	every 16,7 cm

ACCESSORY for LED Tubelight

**Feed-in set**  
233011



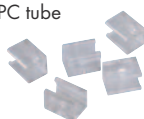
**PC tube, 2m piece, 10x10 mm**  
Inner dimensions: 0,8 x 0,8 cm  
211200



**Longit. connector IP55**  
10 pce.  
233012



**Fastening clips for PC tube**  
10 pce.  
211201



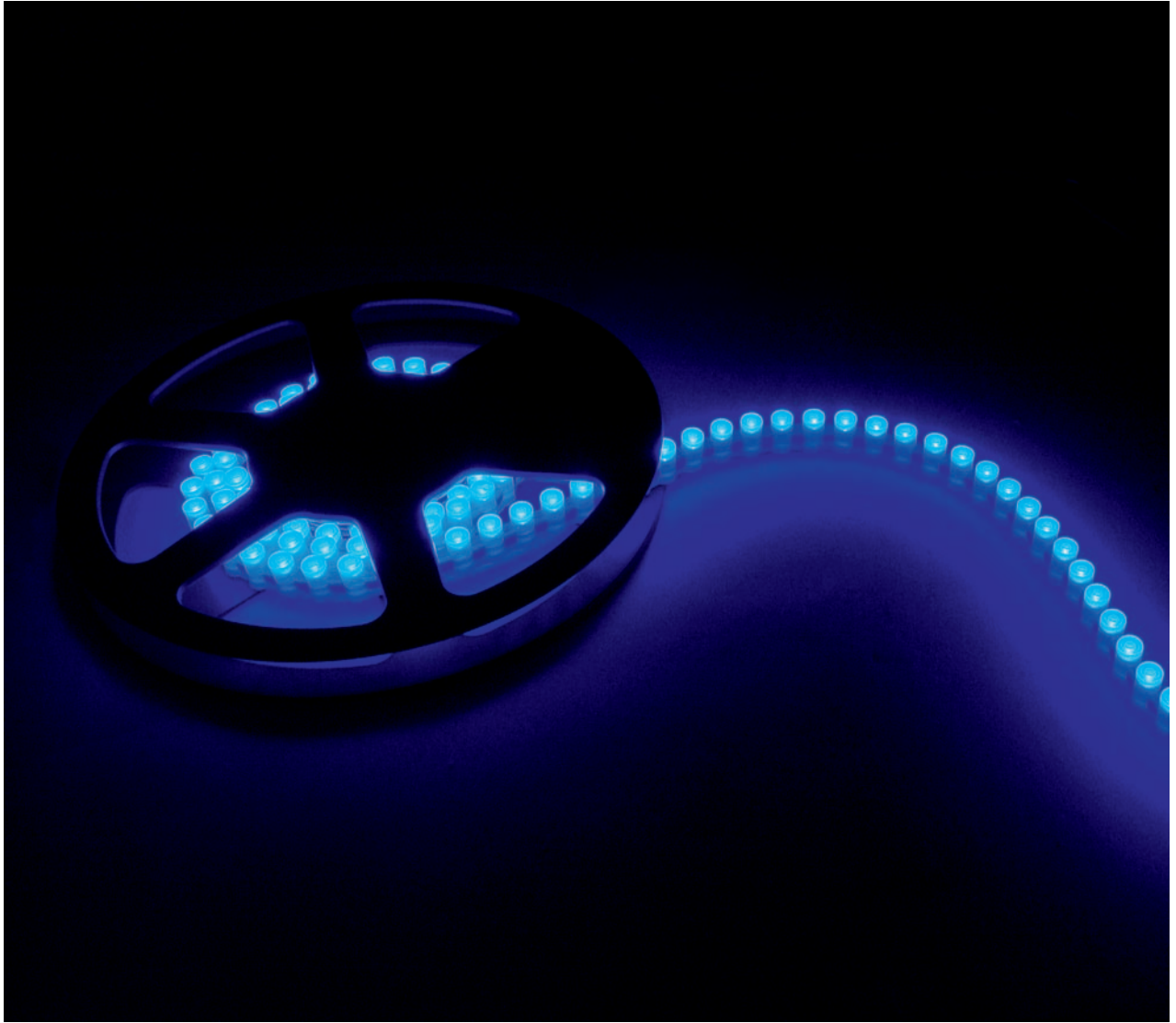
**Mounting clips**  
100 pce.  
233010



**Stair nose profile for PC tube**  
2 m piece  
213302







SILICONE LED FLEXSTRIP 12V=

12V=



Bulb: LED (incl.)

Accessory/Included parts: Power unit (excl.)

Note: Supply line-L: 50 cm  
Min. bending radius: 1,3 cm.  
Further 12V= power units for Silicone LED Flexstrips see page 594-595.

Note: LED Flexstrip 96: By an output of >25W a new feed-in must be made. Please pay attention that the Silicone LED Flexstrip 300 is **not** extendable.

Connect. recommendation: LED power unit, 20W, 12V= 470541



Article No.	Description	LED colour	Voltage	Wattage	LED distance in cm	LEDs per strip	LEDs per m	Length in cm	Width in cm	Height in cm	Operating life	Separability	Weight
550621	Silicone LED Flexstrip 96	white	12V DC	6,6W	0,5	96	100	96,0	0,75	1,4	10000	every 3 LEDs (arrow symbol)	0,07 kg
550622	Silicone LED Flexstrip 96	warm white	12V DC	6,6W	0,5	96	100	96,0	0,75	1,4	10000	every 3 LEDs (arrow symbol)	0,07 kg
550627	Silicone LED Flexstrip 96	blue	12V DC	6,6W	0,5	96	100	96,0	0,75	1,4	10000	every 3 LEDs (arrow symbol)	0,07 kg
550721	Silicone LED Flexstrip 300	white	12V DC	18W	0,5	300	100	300,0	0,75	1,4	10000	every 3 LEDs (arrow symbol)	0,24 kg
550722	Silicone LED Flexstrip 300	warm white	12V DC	18W	0,5	300	100	300,0	0,75	1,4	10000	every 3 LEDs (arrow symbol)	0,24 kg

ACCESSORY for Silicone LED Flexstrip

Mounting clips  
25 pce.  
550630





LED-STRIPS OUTDOOR 100 PRO

24" ← ↑ ↓ 120° IP55



**Bulb:**  
SMD LED (incl.)

**Material:**  
Aluminium/artificial resin

**Dimensions:**  
Supply line-L: 10 cm

**Accessory/Included parts:**  
Power unit (excl.)  
Connector and coupler (incl.)

**Note:**  
Strips cast in artificial resin.  
Dimmable with PWM converter.  
Operating temperature max. +40°C.  
Please protect from direct solar radiation.

By an output of >50W a new feed-in must be made!  
Further power units can be found in the accessory range from page 594 onward.

**Connect. recommendation:**  
LED power unit 12W, 24V=  
470502



**Connect. recommendation:**  
1 channel PWM converter  
100W, 24V=  
470550



Article No.	Description	LED colour	Voltage	Wattage	LED distance in cm	LEDs per strip	LEDs per m	Length in cm	Width in cm	Height in cm	Operating life	Weight
552301	LED-Strips Outdoor 100 Pro	white	24V DC	8,5W	0,8	96	96	100,5	2,0	1,5	20000	0,47 kg
552302	LED-Strips Outdoor 100 Pro	warm white	24V DC	8,5W	0,8	96	96	100,5	2,0	1,5	20000	0,47 kg
552307	LED-Strips Outdoor 100 Pro	blue	24V DC	8,5W	0,8	96	96	100,5	2,0	1,5	20000	0,47 kg

When connecting several strips, please pay attention to the total wattage! Further power units and PWM converters can be found on pages 594-595, 587.

ACCESSORY for LED-Strips Outdoor 100 Pro

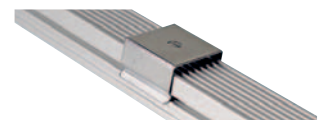
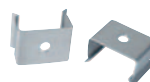
**Feed-in cable IP65, 50W max.**  
4core  
Cable-L: 5 m  
229821



**Connector cable IP65, 50W max.**  
4core  
Cable-L: 1 m  
229820

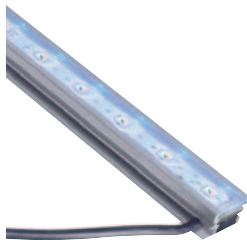


**Holding clamp, 10 pce.**  
552300





LED-STRIPS OUTDOOR 100 RGB 3in1



**Bulb:**  
3in 1 RGB LED (incl.)

**Material:**  
Aluminium/artificial resin

**Dimensions:**  
Supply line-L: 10 cm

**Accessory/Included parts:**  
Power unit (excl.)  
Controller (excl.)

**Note:**  
Strips in aluminium profile, cast in artificial resin and equipped with a plug and coupler. 3in1 technology for optimal light mixing!  
By an output of >50W a new feed-in must be made.  
Operating temperature max. +40°C.  
Protect from direct solar radiation.

**Connect. recommendation:**  
LED power unit, 100W, 24V= 470500



**Connect. recommendation:**  
Easy LIM® PRO RF 12V=/24V= Radio-Master controller 16,5W/channel, 12V= 470600



Article No.	Description	LED colour	Voltage	Wattage	LED distance in cm	LEDs/ Strip	LEDs/ m	Length in cm	Width in cm	Height in cm	Operating life	Separability
229813	LED-Strips Outdoor 100 RGB	RGB	24V DC	10,5W	2,0	40	40	100	2,5	1,5	20000 h	-

ACCESSORY for LED-Strips Outdoor 100 RGB 3in1

**Feed-in cable IP 65, 50W max.**  
5core  
Cable-L: 5 m  
229803



**Connector cable IP65, 50W max.**  
5core  
Cable-L: 1 m  
229804



**Mounting clips V2A 25 pce.**  
For easy laying of LED-Strips Outdoor 100.  
229802



**Connection scheme 5core:**  
Connection cable can be loaded up to maximal 50W.  
Attention! In case of larger lengths a new parallel feed-in must be made!